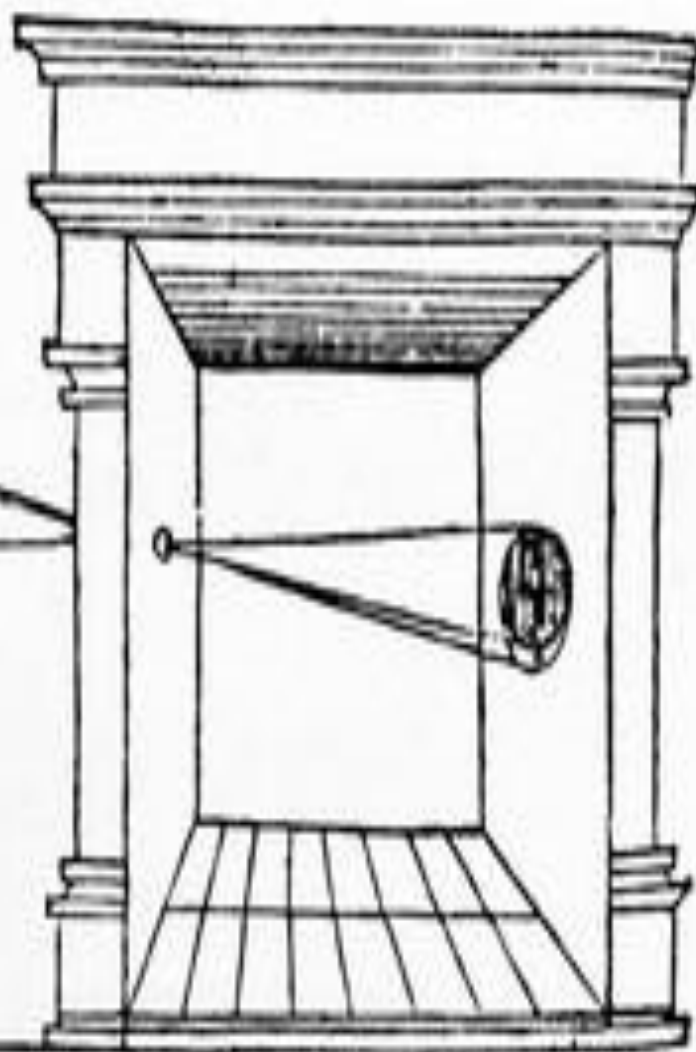
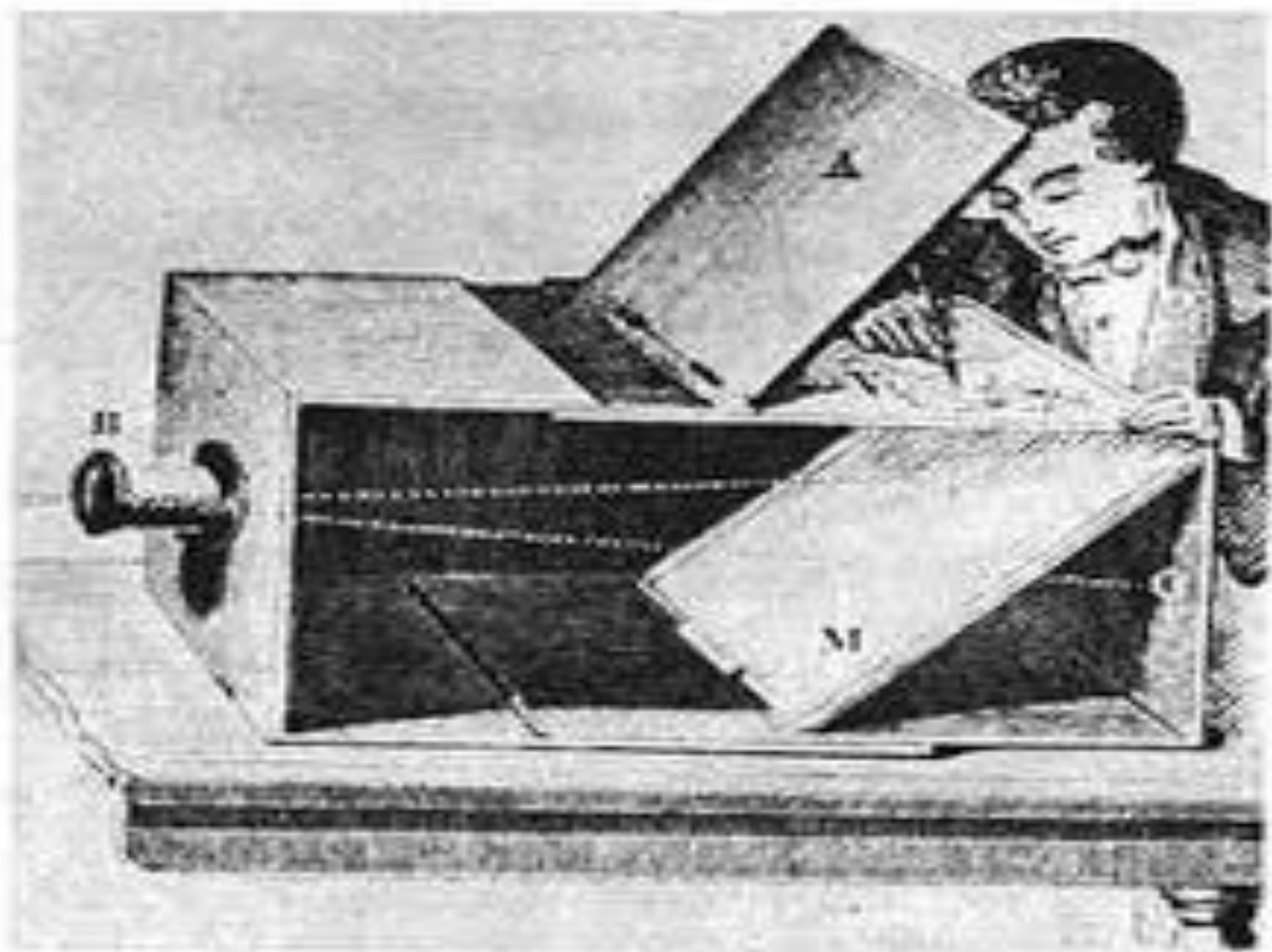


Solis deliquium Anno Christi
1544. Die 24. Januarij
Leonarj









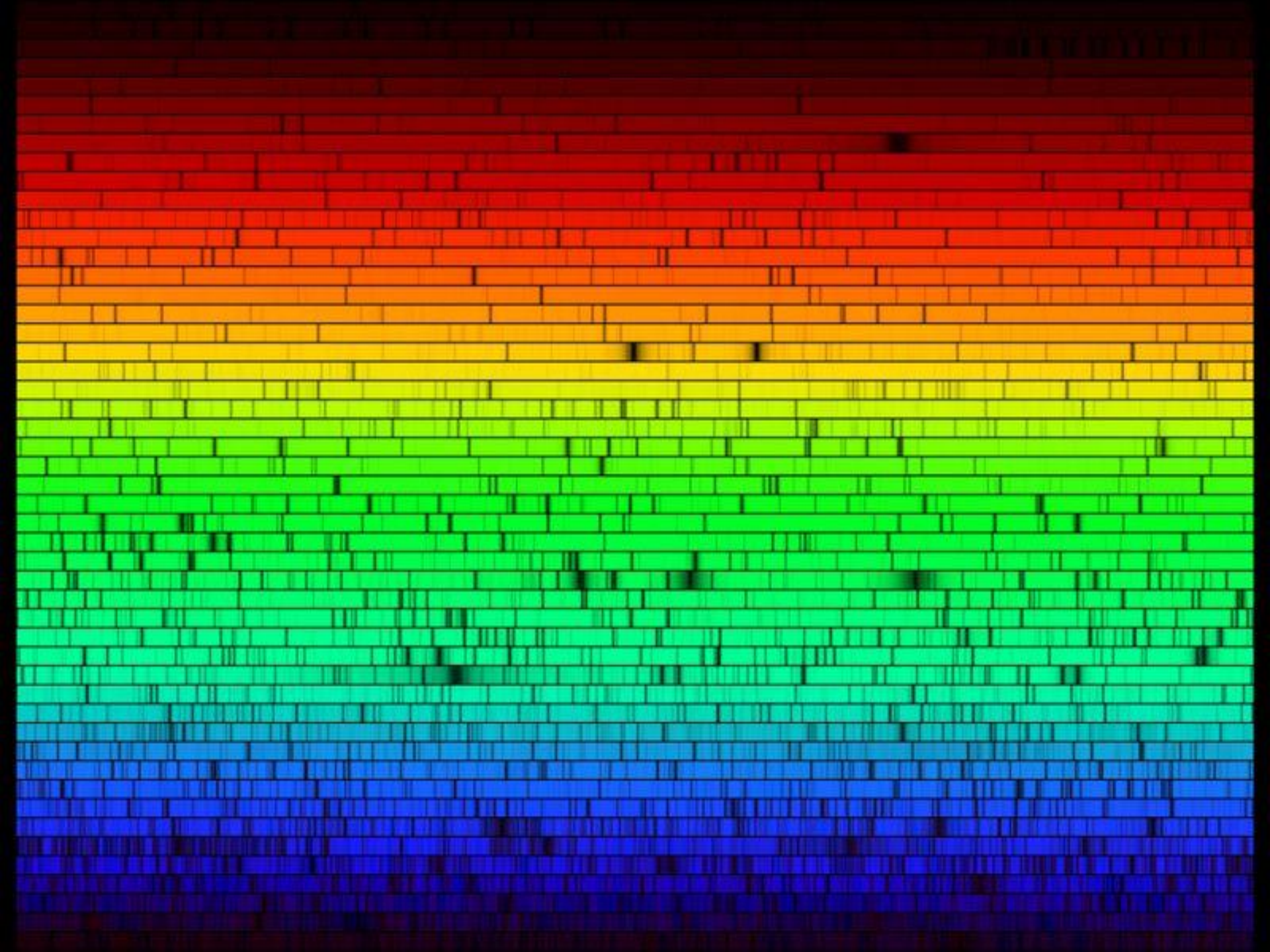


Latticed Window
(with the Camera Obscura)
August 1835

When first made, the squares
of glass about 200 in number
could be counted, with help
of a lens.

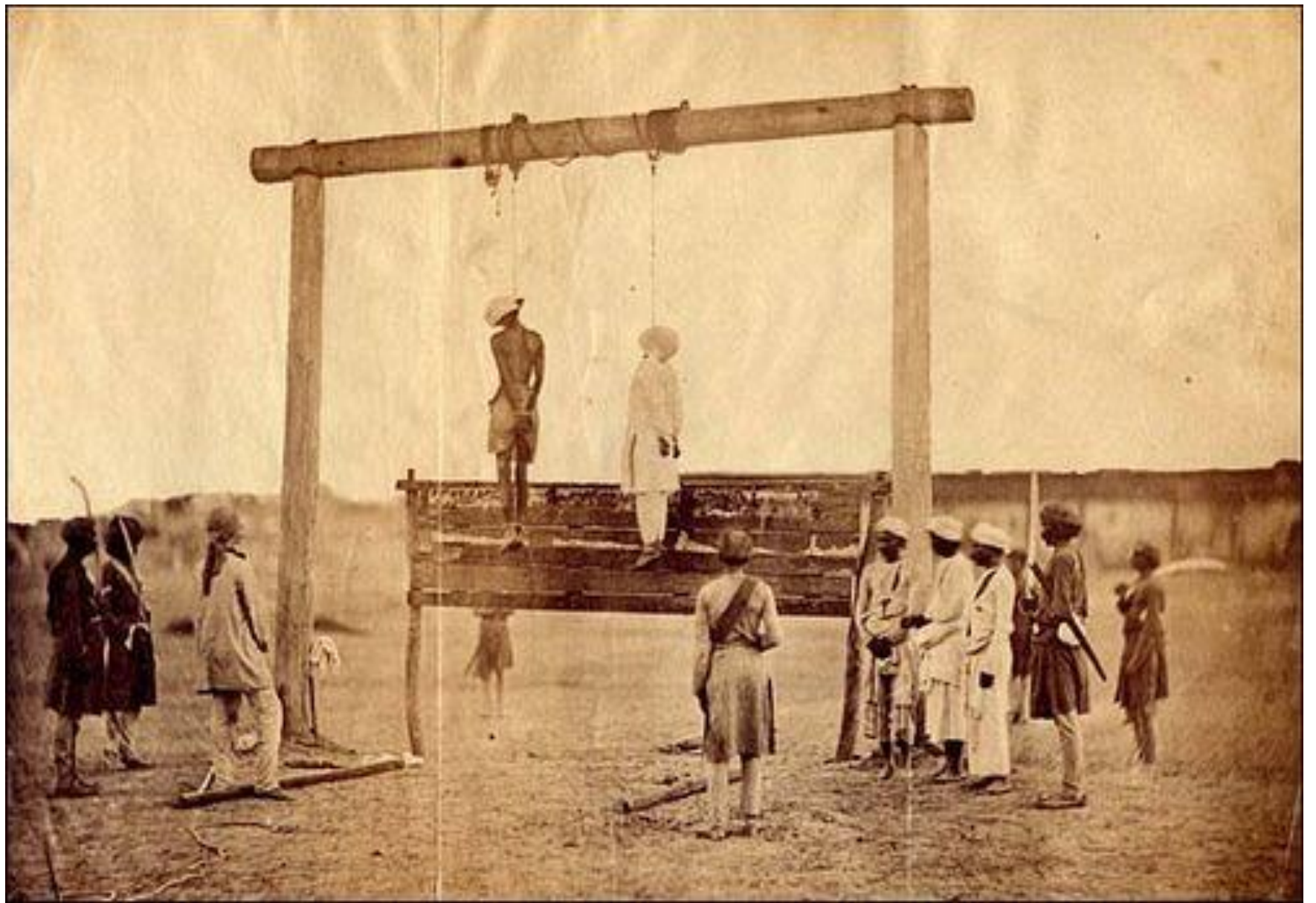






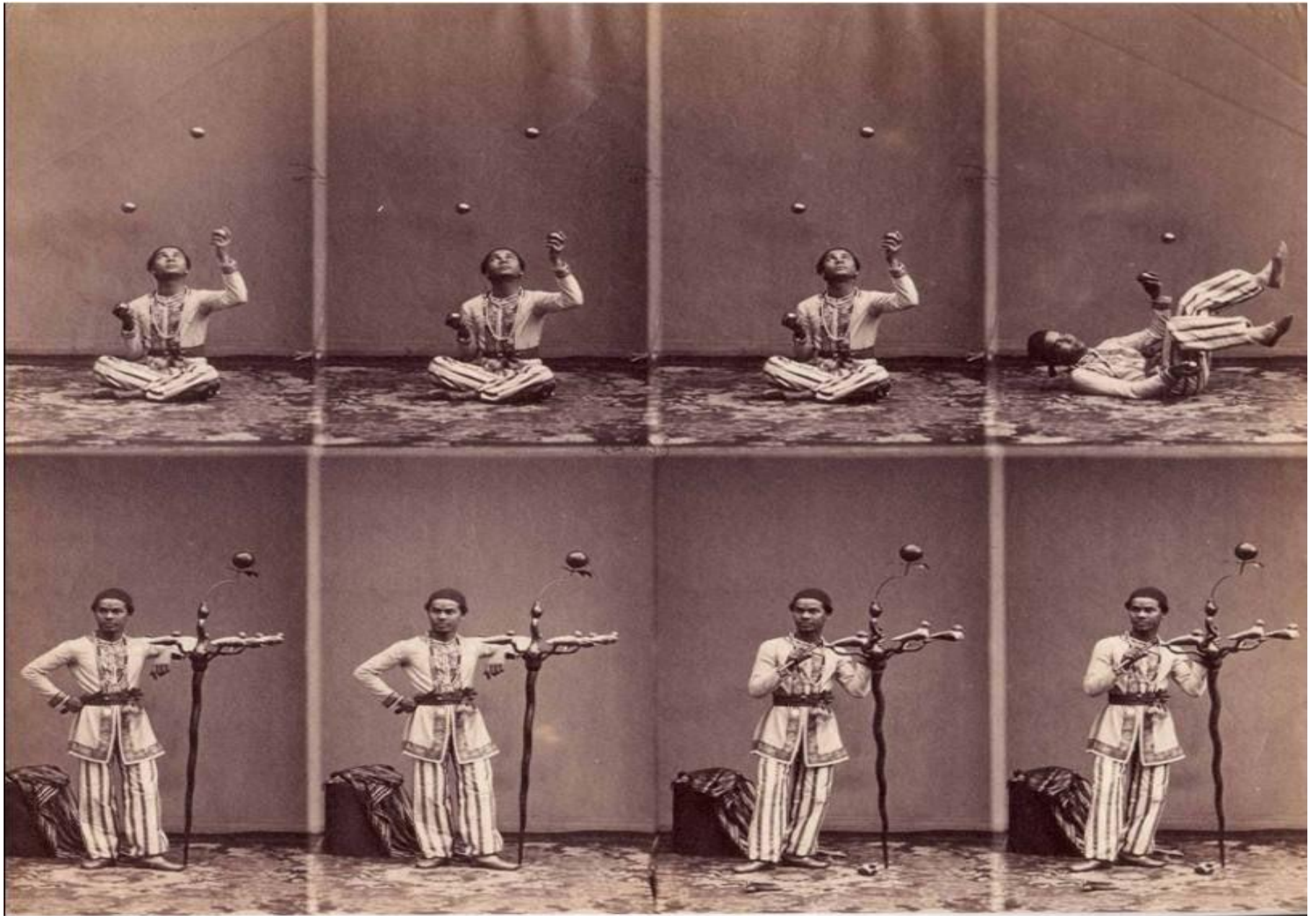




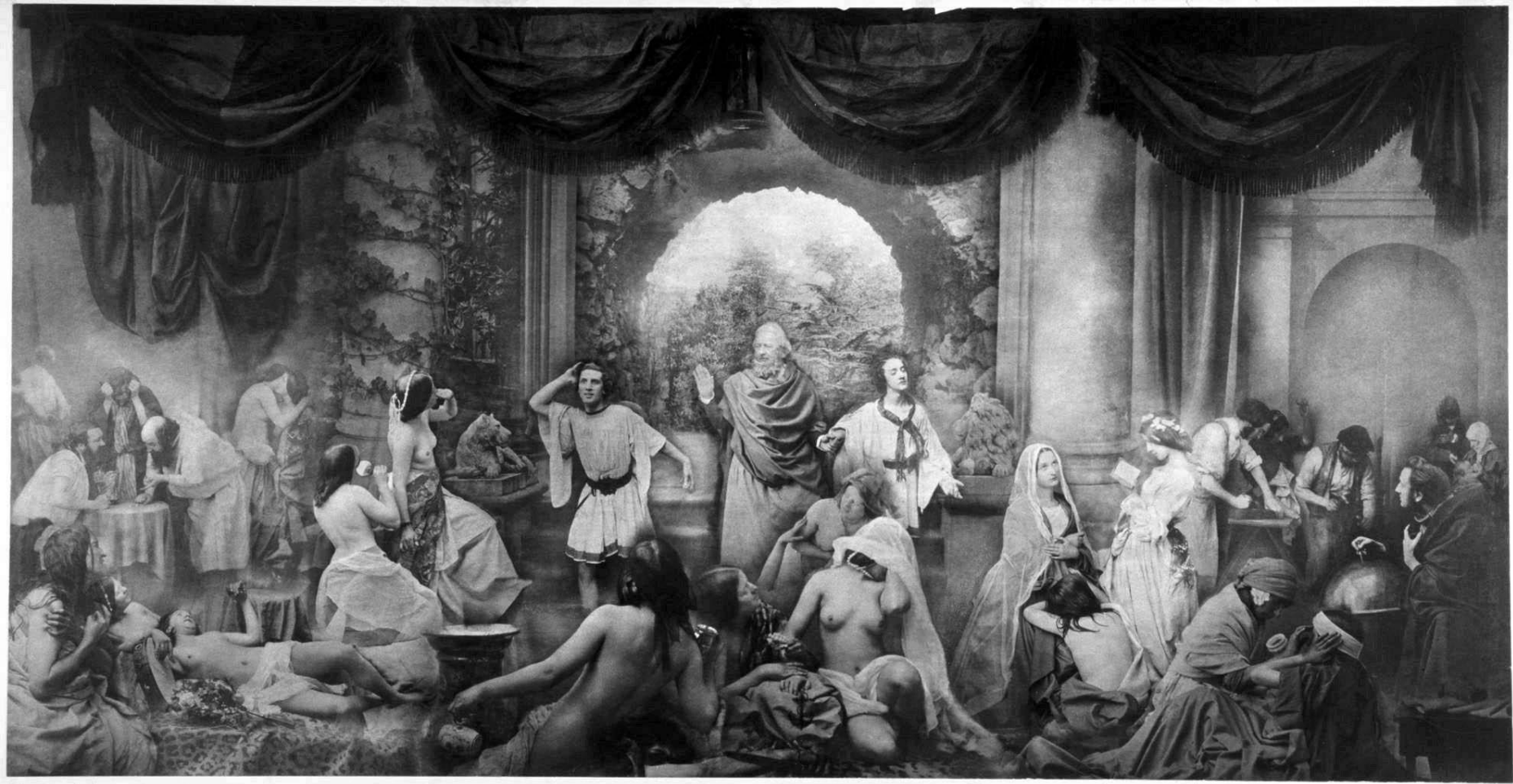








André Adolphe Eugène Disdéri - *The Juggler*, c. 1860. Albumen print from a glass negative, 19.8 x 23.1 cm.
Courtesy of Hans P. Kraus, Jr. Fine Photographs





Kapteyn's Star - HIP 24186

Magnitude: **8.85** (B-V: 1.55)

Magnitude absolue: 10.88

AD/DEC (J2000): 5h11m47.0s/-45°02'27.9"

AD/DEC (de la date): 5h12m8s-45°01'38"

Angle horaire/dec: 22h46m14s/-45°01'38"

Az/Haut: +167°04'39"/-1°06'32"

Type spectral: M0V

Distance: 12.78 année(s)-lumière

Parallaxe: 0.25526

